

SANESO'S 360° COLONOSCOPE LETS YOU SEE WHAT OTHER COLONOSCOPES MISS

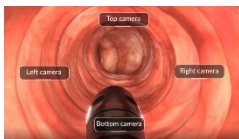


Make your preventive care more complete

Saneso knows that vigilant and thorough medical exams are of paramount importance in the preventive care of your patients. Our groundbreaking endoscope technology takes this thoroughness to the next level in examination of the gastrointestinal (GI) tract.

Traditional colonoscopes miss 25%-40% of polyps

Traditional colonoscopes have a limited 140° -170° field of view, which causes them to miss 25 - 40% of polyps during routine colonoscopies. Why? Their single front-view only camera cannot see behind the folds and turns of the GI tract. Saneso's five-camera endoscope platform with a 360° integrated field of vision is the solution.



Saneso: An early detection advantage

We give physicians a significant advantage in early detection over traditional endoscopes. Our proprietary Image Integration™ technology processes images from 5 cameras in real time and provides an unprecedented 360° integrated view of the GI tract. A recent study confirms that Saneso's colonoscope significantly increases polyp detection.

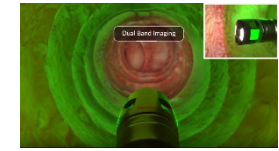
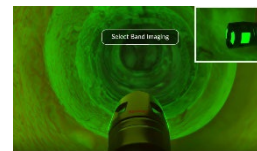
Familiar ergonomic controls. Flexible and maneuverable

Saneso endoscopes operate and handle like traditional endoscopes with little or no learning curve.



Features include:

Vertical & horizontal bending radius of 180° & 160° respectively, diameter 10.8-13.8 mm, preserved mechanical characteristics, a 3.7 mm therapeutic channel for a wide range of interventions, compatible with all common automated endoscope re-processors.



Advanced LED lighting and a clear view

Select Band Imaging™ examines the GI tract in a narrow spectrum. Dual Band Imaging™ examines the GI tract simultaneously under white and narrow spectrum. Exclusive multi-nozzle lens wash for all cameras and lights and a dedicated tissue wash channel provides a clear view at all times.

About us:

Saneso™ is a US-based medical technology company headquartered in Pittsburgh, PA. We are engaged in the development of next generation endoscope systems. Our groundbreaking five camera endoscope platform provides an unprecedented 360° integrated view of the gastrointestinal tract.

Contact:
Government Affairs
Saneso Inc.
One Oxford Center
301 Grant Street, Suite 270 Pittsburgh, PA 15219
Global: 412.204.7318
Office: 412.250.7621
Email: government.affairs@saneso.com
Saneso.com

